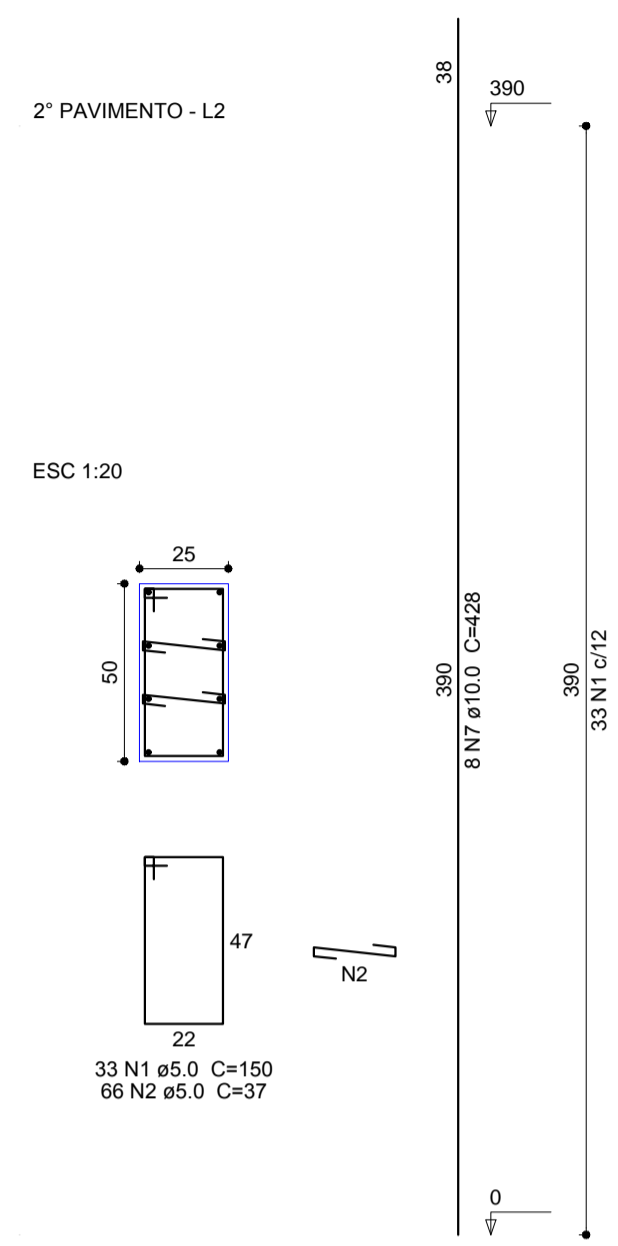
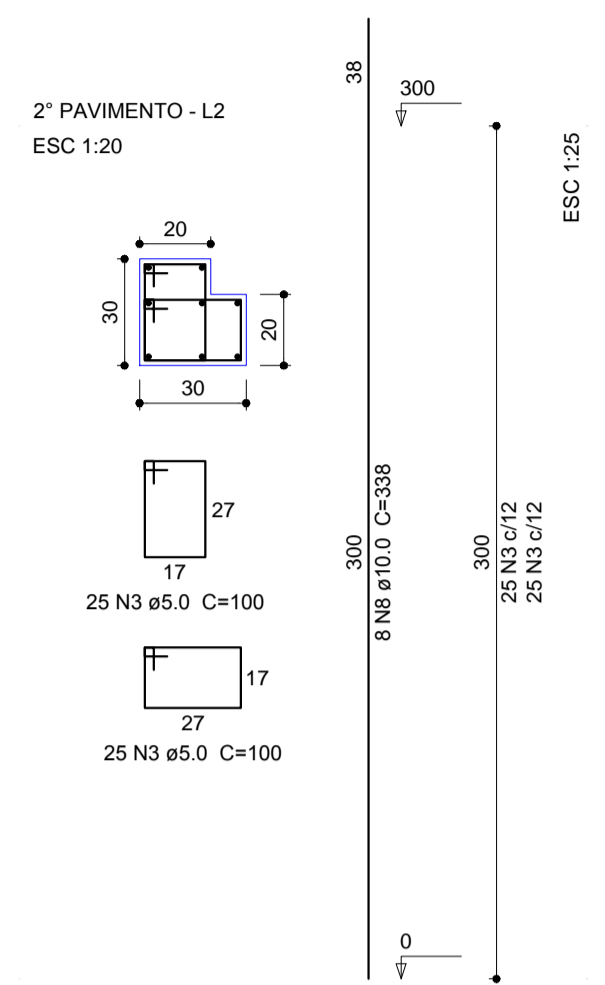


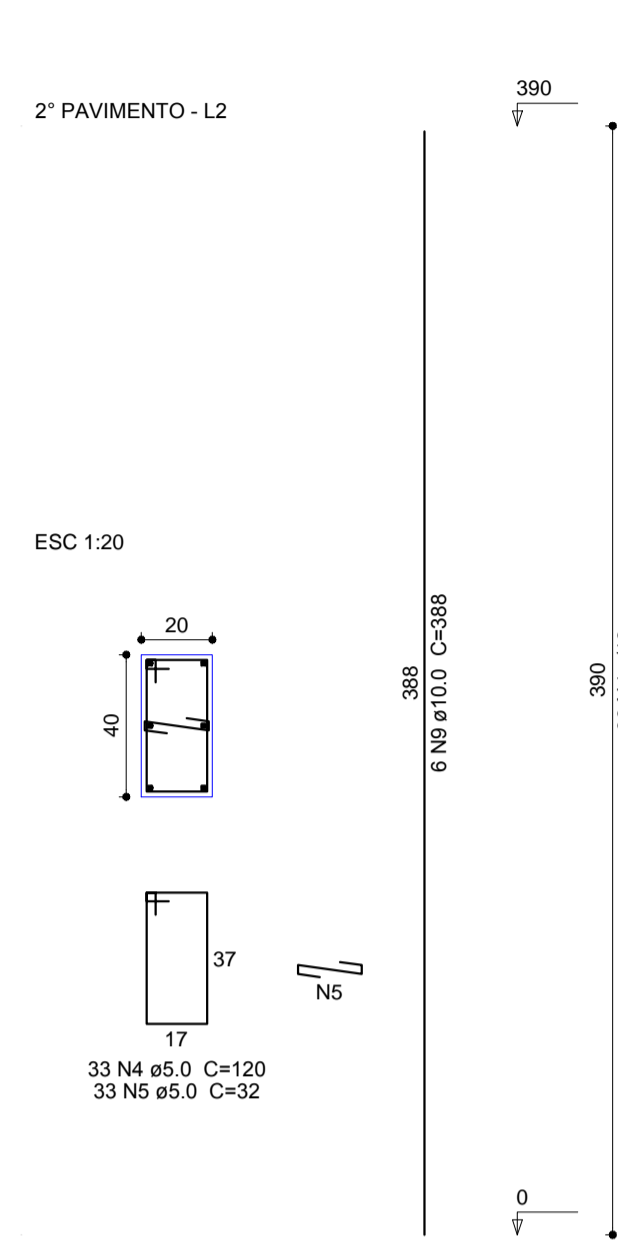
P1=P11=P22=P32



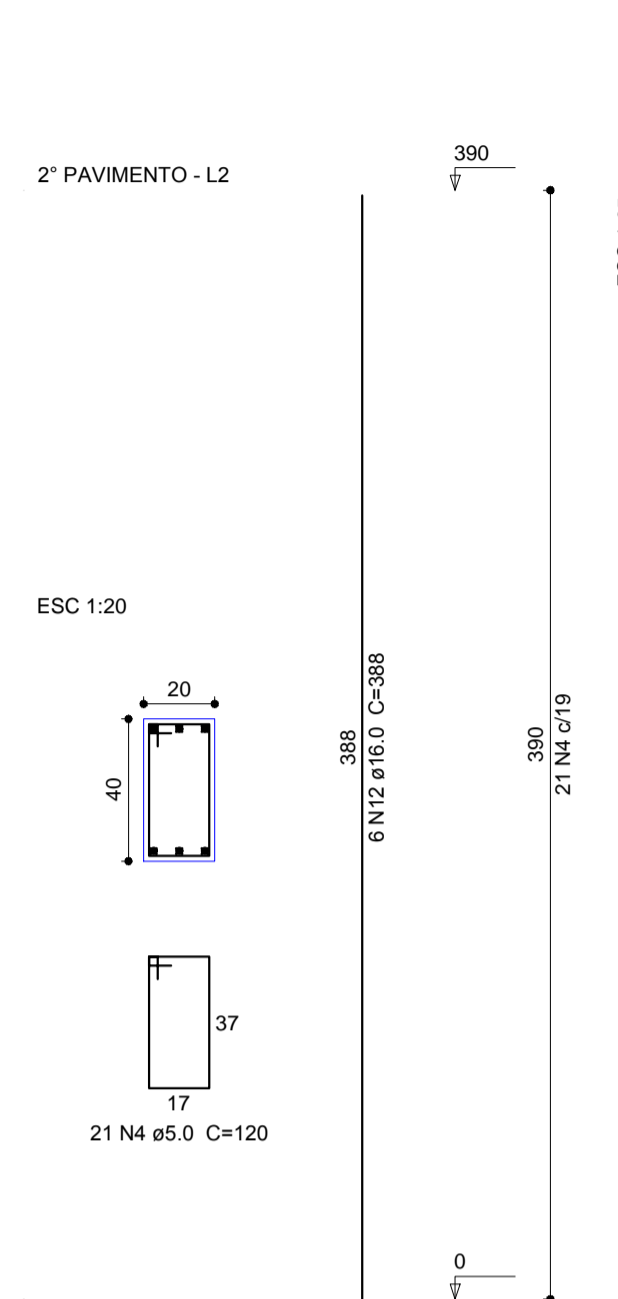
P10=P18=P20=P30=P40=P41



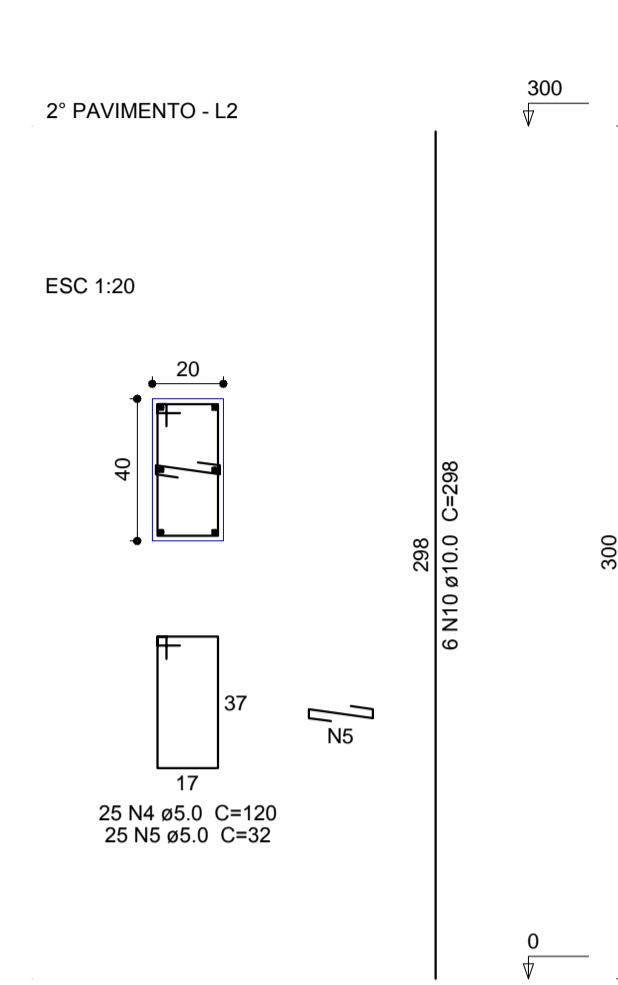
P12=P23=P24



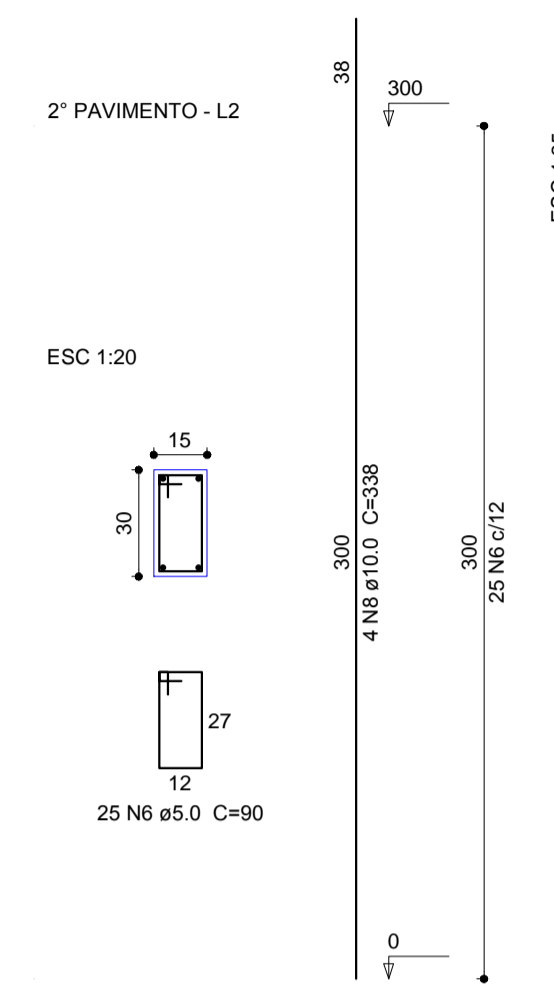
P13



P14=P15=P16=P25=P26=P27



P17=P28



Relação do aço

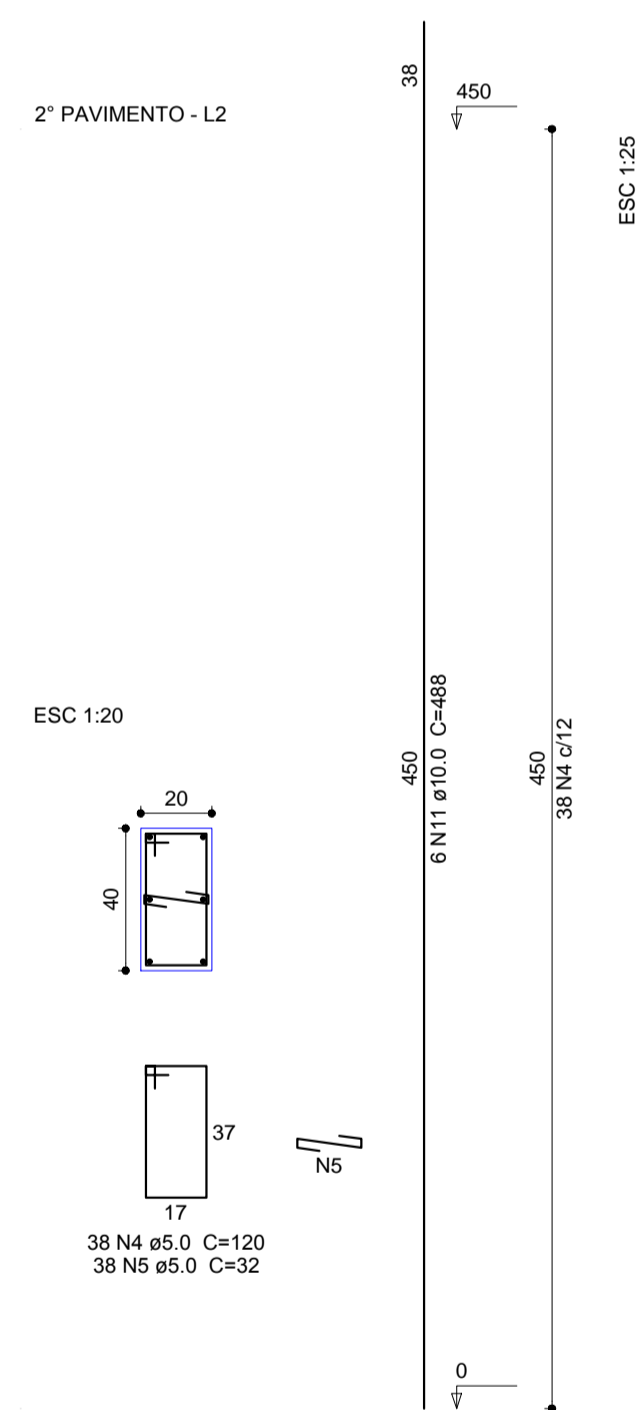
AÇO	N	DIAM (mm)	QUANT (Barras)	UNIT (cm)	C.TOTAL (cm)
CA60	1	5.0	182	150	27300
	2	5.0	364	37	13468
	3	5.0	426	100	42600
	4	5.0	653	120	78360
	5	5.0	632	32	20224
	6	5.0	50	90	4500
	7	10.0	56	428	23968
	8	10.0	122	338	41236
	9	10.0	18	388	6984
	10	10.0	36	298	10728
	11	10.0	20	488	9760
	12	16.0	6	388	2328

Resumo do aço

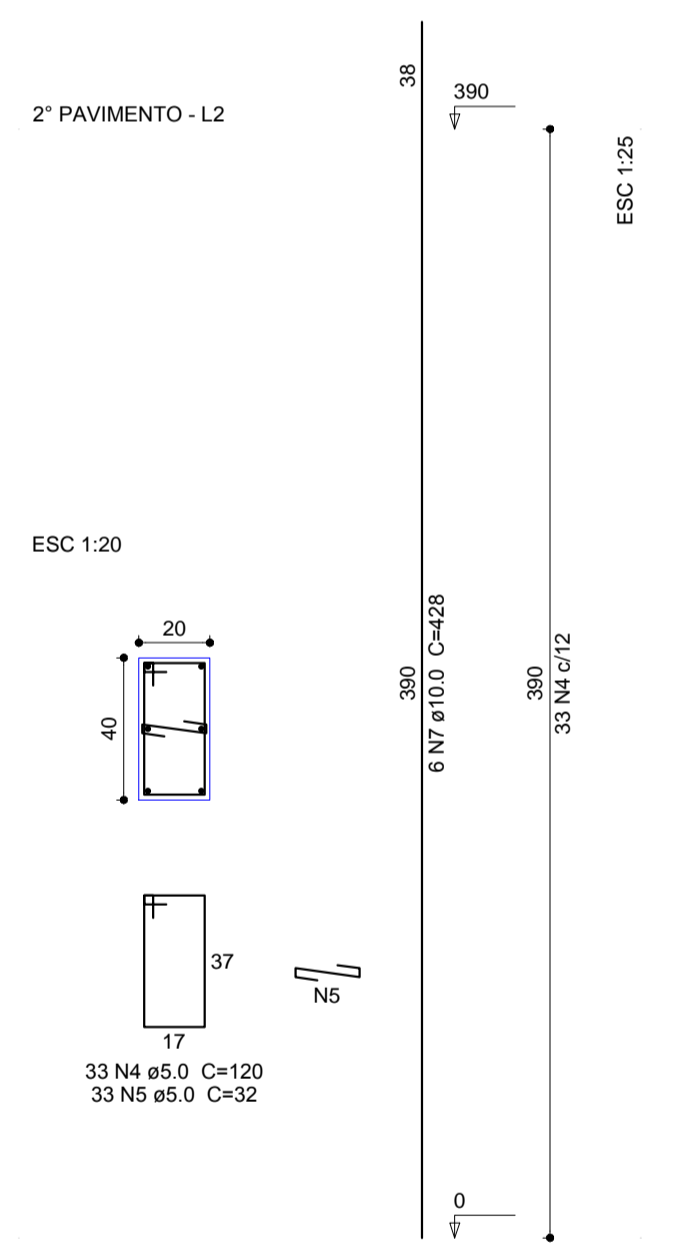
AÇO	DIAM (mm)	C.TOTAL (m)	PESO + 10% (kg)
CA50	10.0	926.8	628.5
CA60	5.0	1864.6	40.4
PESO TOTAL (kg)			316.1
CA50		668.9	
CA60		316.1	

Volume de concreto (C-25) = 11.65 m³  
Área de forma = 169.44 m²

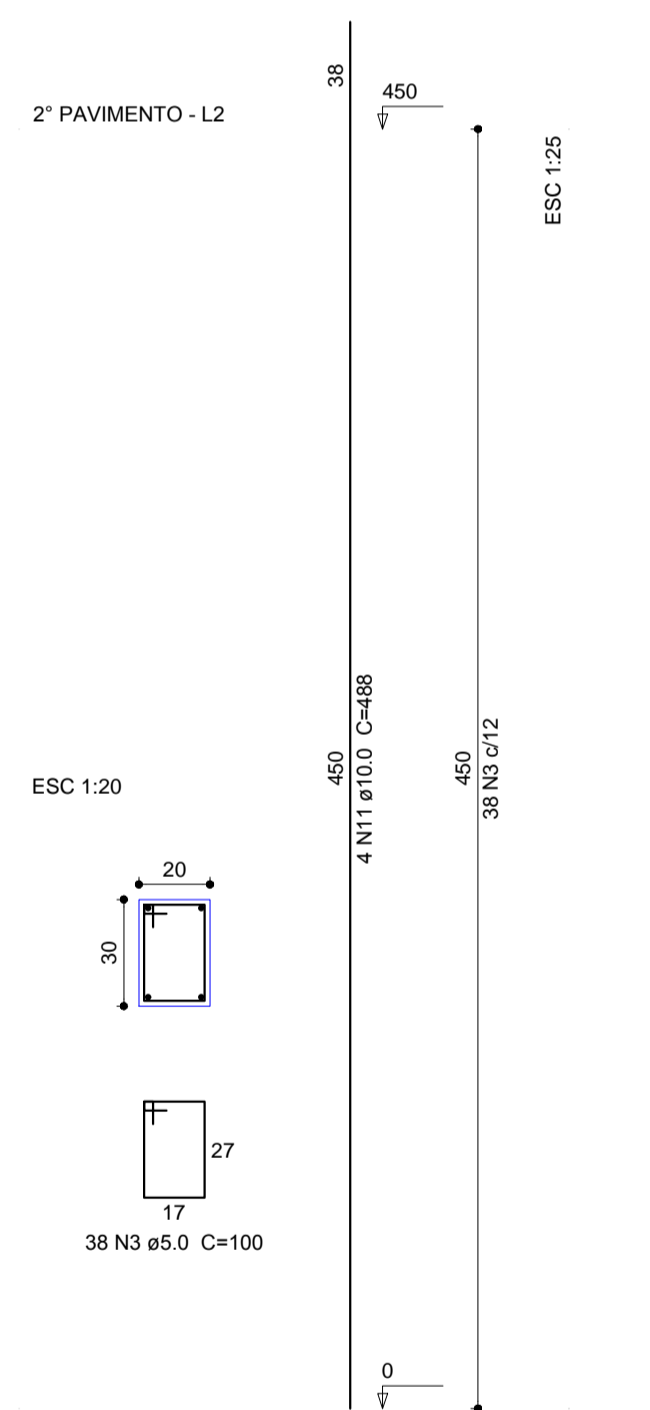
P19=P29



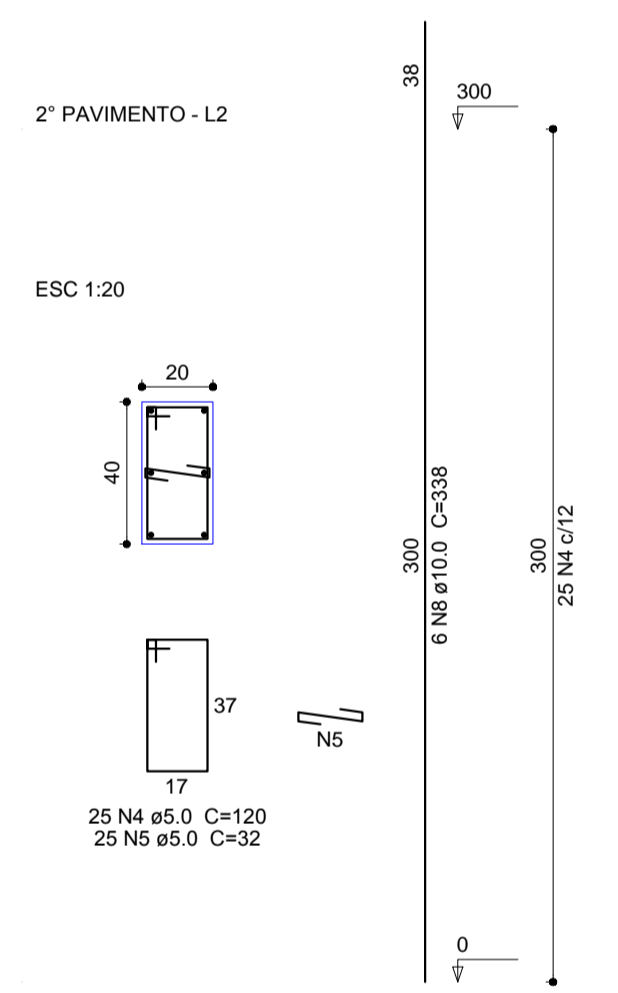
P2=P3=P33=P34



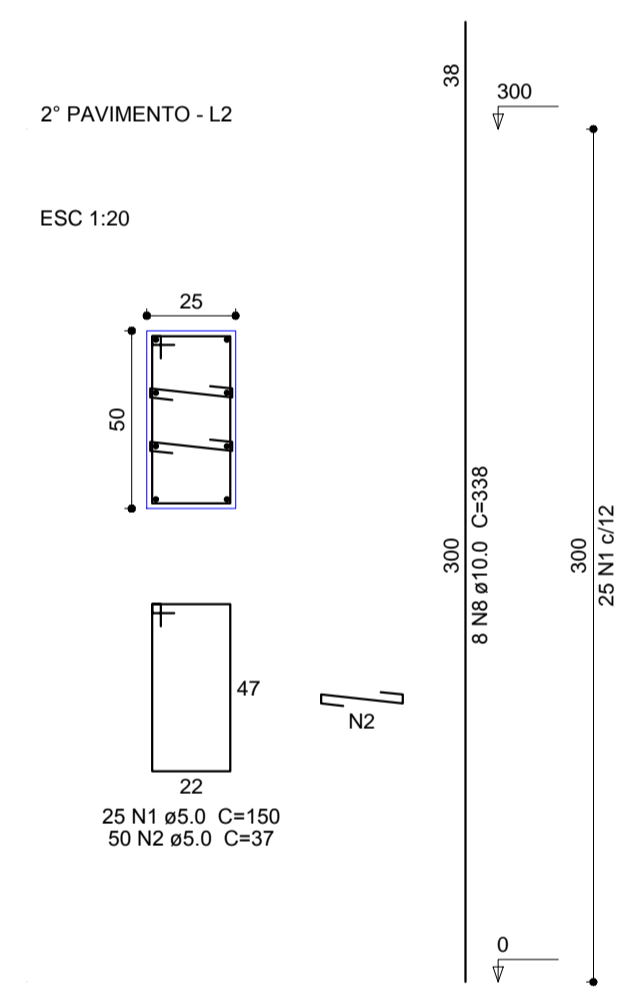
P21=P31



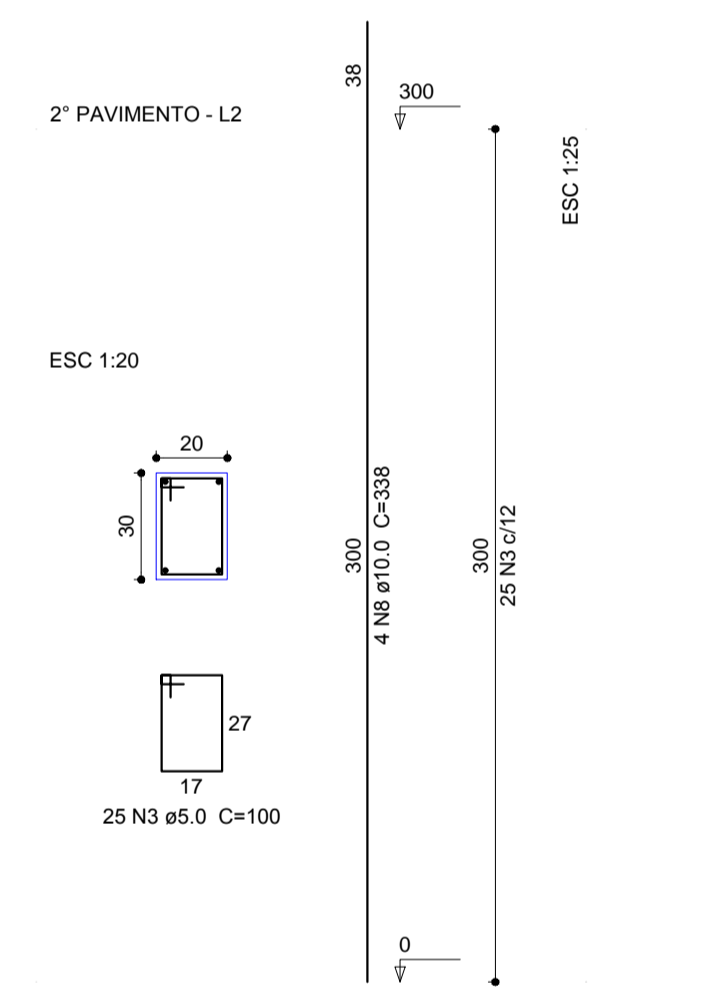
P4=P5=P6=P35=P36=P37=P39



P7=P38



P8=P9



PROJETO: PROJETO ESTRUTURAL CRECHE DE COXILHA

RESPONSÁVEL TÉCNICO:

PAULO FRANCISCO MORANDO  
ENG. CIVIL - CREA 53822

DESENHO:

PROJETO: FERRAGEM DOS PILARES DE SUSTENTAÇÃO DO 2º PAVIMENTO



R. Capitão Eleutério, 610, sala 104  
Fone: 3313-5454 - 9981-2306  
Passo Fundo - RS.

PROPRIETÁRIO: PREFEITURA MUNICIPAL DE COXILHA

ÁREA: m² | ESCALA: 1/50 | DATA: JUNHO/19 | PRCHA: 10