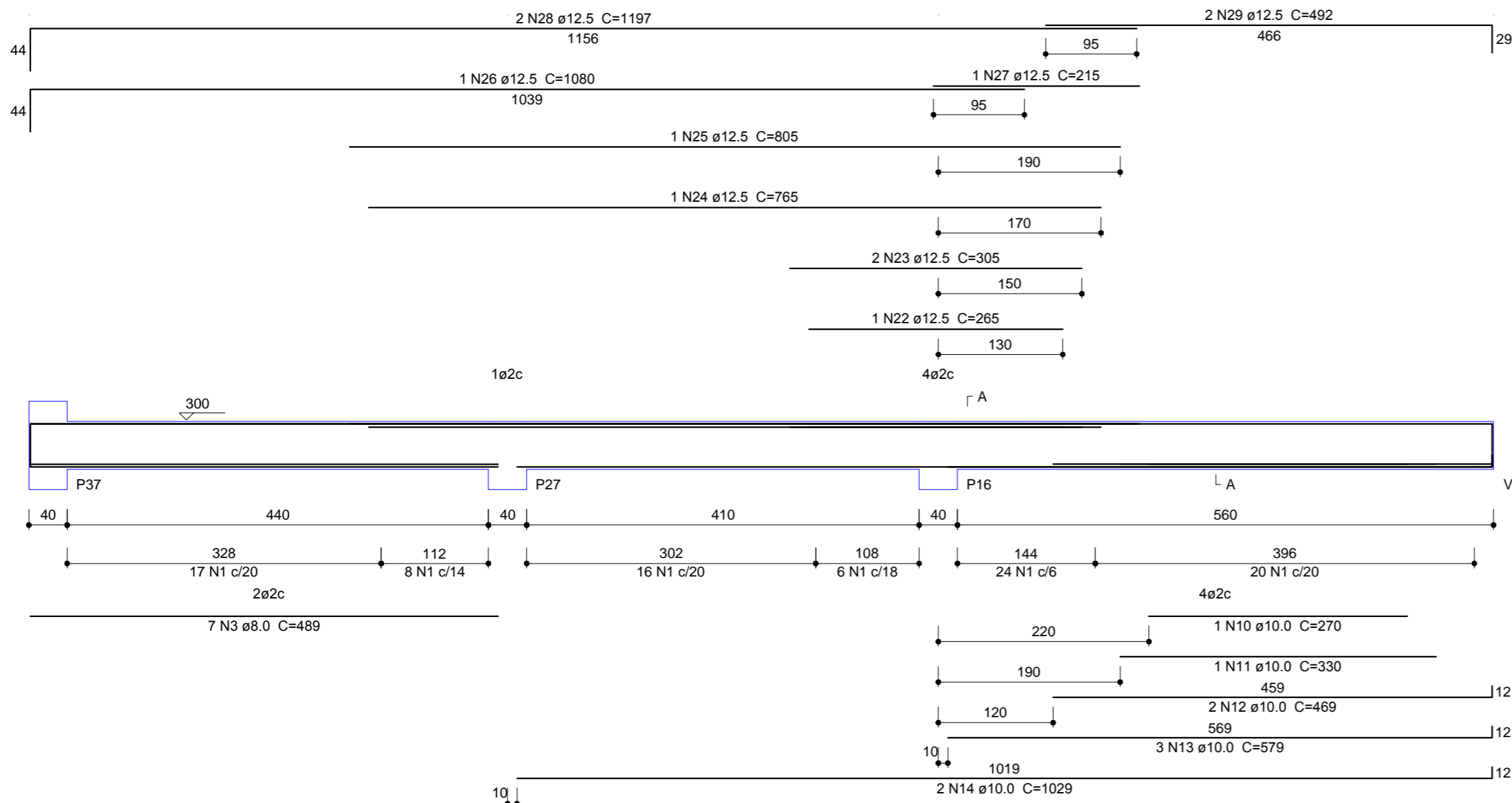
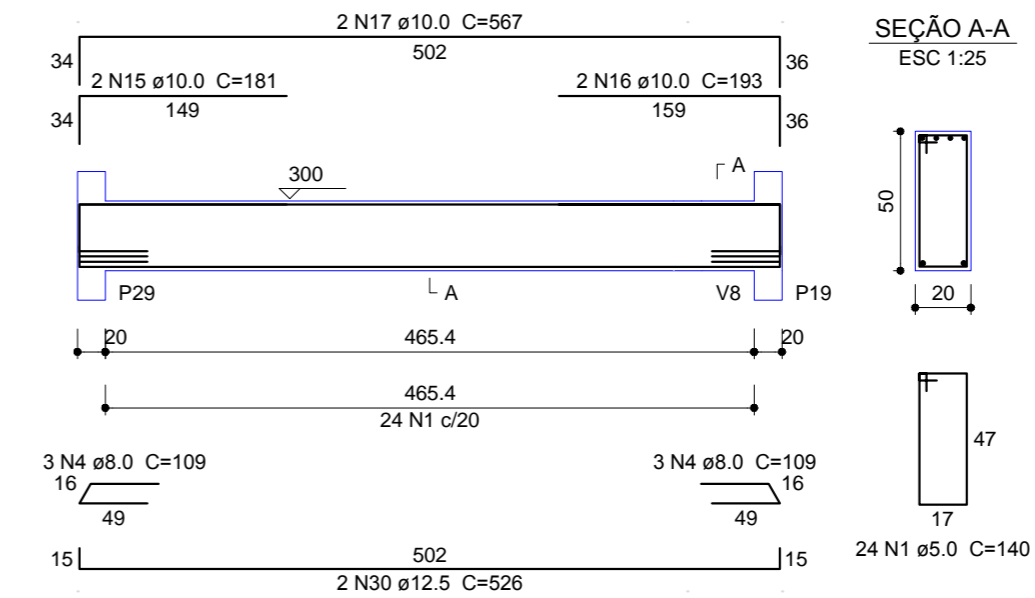


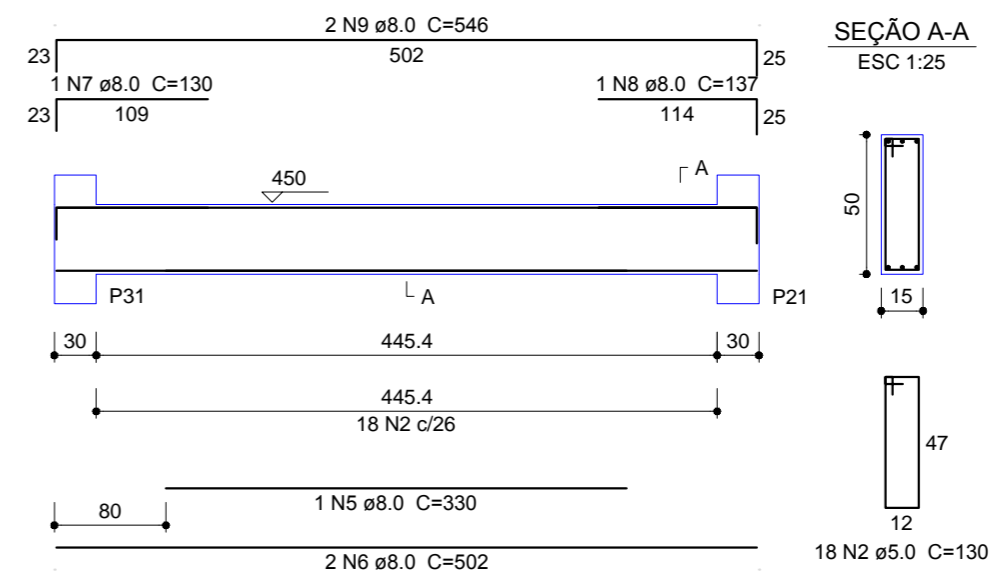
**V26**  
ESC 1:50



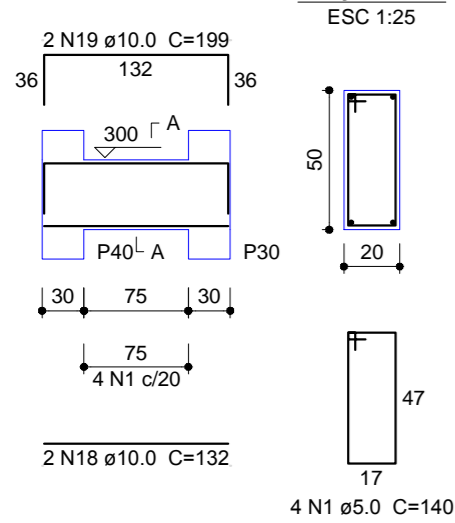
**V29**  
ESC 1:50



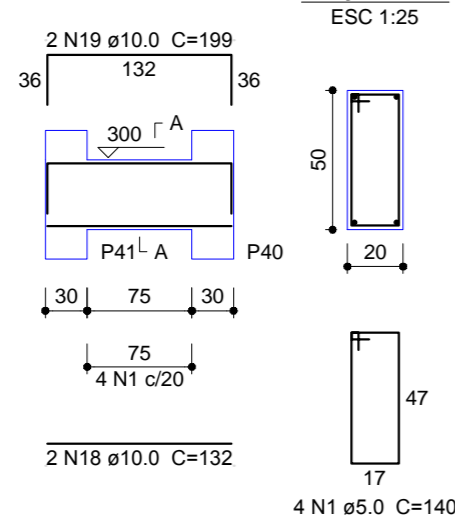
**V32**  
ESC 1:50



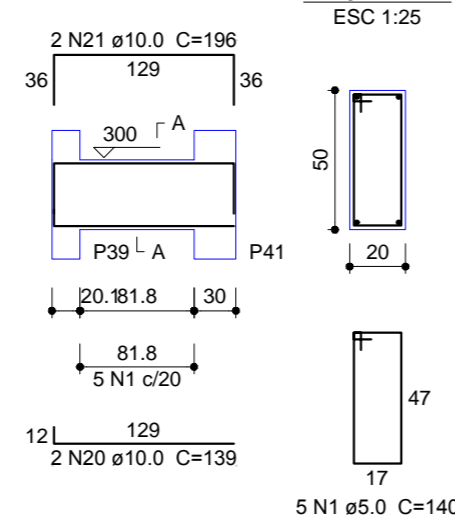
**V38**  
ESC 1:50



**V39**  
ESC 1:50



**V40**  
ESC 1:50



**Relação do aço**

AÇO	N	DIAM (mm)	QUANT (Barras)	UNIT (cm)	C.TOTAL (cm)
CA60	1	5.0	128	140	17920
CA60	2	5.0	18	130	2340
CA50	3	8.0	7	489	3423
CA50	4	8.0	6	109	654
CA50	5	8.0	1	330	330
CA50	6	8.0	2	502	1004
CA50	7	8.0	1	130	130
CA50	8	8.0	1	137	137
CA50	9	8.0	2	546	1092
CA50	10	10.0	1	270	270
CA50	11	10.0	1	330	330
CA50	12	10.0	2	469	938
CA50	13	10.0	3	579	1737
CA50	14	10.0	2	1029	2058
CA50	15	10.0	2	181	362
CA50	16	10.0	2	193	386
CA50	17	10.0	2	567	1134
CA50	18	10.0	4	132	528
CA50	19	10.0	4	199	796
CA50	20	10.0	2	139	278
CA50	21	10.0	2	196	392
CA50	22	12.5	1	265	265
CA50	23	12.5	2	305	610
CA50	24	12.5	1	765	765
CA50	25	12.5	1	805	805
CA50	26	12.5	1	1080	1080
CA50	27	12.5	1	215	215
CA50	28	12.5	2	1197	2394
CA50	29	12.5	2	492	984
CA50	30	12.5	2	526	1052

**Resumo do aço**

AÇO	DIAM (mm)	C.TOTAL (m)	PESO + 10% (kg)
CA50	8.0	67.7	29.4
CA50	10.0	92.1	62.5
CA50	12.5	81.7	86.6
CA60	5.0	202.6	34.4
<b>PESO TOTAL (kg)</b>			
CA50		178.4	
CA60		34.4	

Volume de concreto (C-25) = 2.82 m³  
Área de forma = 35.06 m²

PROJETO:  
**PROJETO ESTRUTURAL  
CRECHE DE COXILHA**

RESPONSÁVEL TÉCNICO:

PAULO FRANCISCO MORANDO  
ENG. CIVIL - CREA 53822

DESENHO:

PROJETO:  
FERRAGEM DAS VIGAS  
DO 2º PAVIMENTO.

ÁREA:  
m²

ESCALA:  
1/50

DATA:  
JUNHO/19

PRACA:  
09



R. Capitão Eleutério, 610, sala 104  
Fone: 3313-5454 - 9981-2306  
Passo Fundo - RS.

PROPRIETÁRIO:  
PREFEITURA MUNICIPAL DE COXILHA