



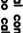



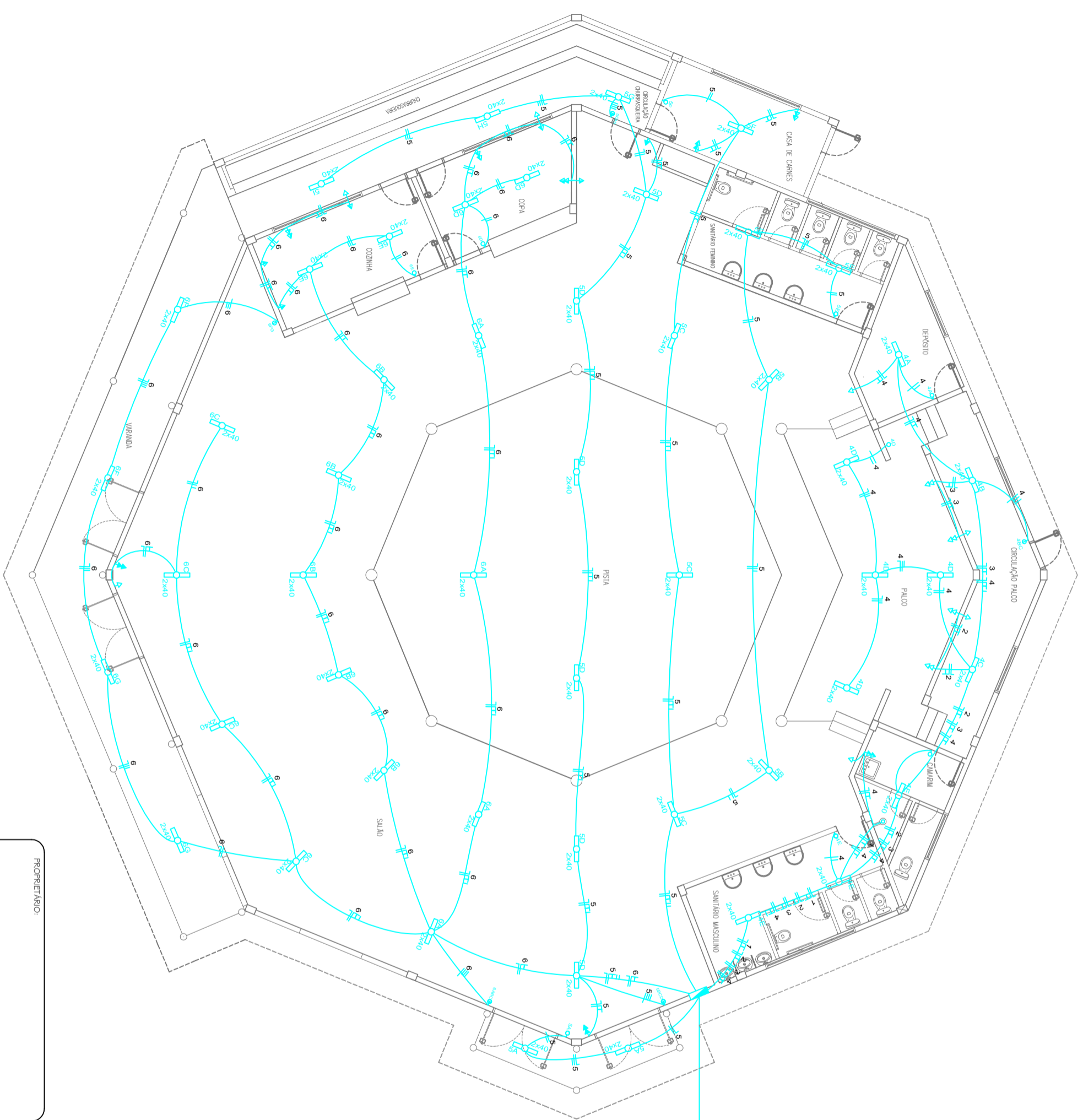


QUADRO DE CARGAS

CIRC.	LAMP	TOMADA	TOMADA	CHUVEIRO	CARGA	FIO	DISJ.
Nº	40W	100W	600W	3.500W	W	mm²	(A)
1				1	3500	6,0	30
2				5	3000	6,0	30
3				5	3000	6,0	30
4	20			4	3200	6,0	30
5	38			3	4220	6,0	30
6	42			4	10280	6,0	30
TOTAL					25000	10,0	

LEGENDA

-  Iluminação geral com lâmpada fluorescente tipo coltu 2x40W
-  Tomada de energia baixa (0,30 m do piso acabado)
-  Tomada de energia média (1,30 m do piso acabado)
-  Tomada de energia alta (2,00 m do piso acabado)
-  Interruptor simples
-  Interruptor duplo
-  Interruptor triplo
-  Quadro de distribuição



OBRA LOCAL:
Conclusão do Centro Municipal de Eventos
 Rua Crispim Teixeira Sobrinho, S/Nº, Coxilha-RS

TÍTULO:
Projeto Elétrico

DESCRIÇÃO:
Planta Baixa/Quadro de Cargas

PROPRIETÁRIO:
 JOÃO EDUARDO OLIVEIRA MANICA
 PREFEITO MUNICIPAL

RESPONSÁVEL TÉCNICO:
 MARCOS ANDRÉ MOZZO ZAVODNIK
 Eng.º Civil CRF/RN 157.792

ESCALA:
 1/125

DATA:
 SETEMBRO/2021

FRANQUIA Nº:
ELE 01/01