

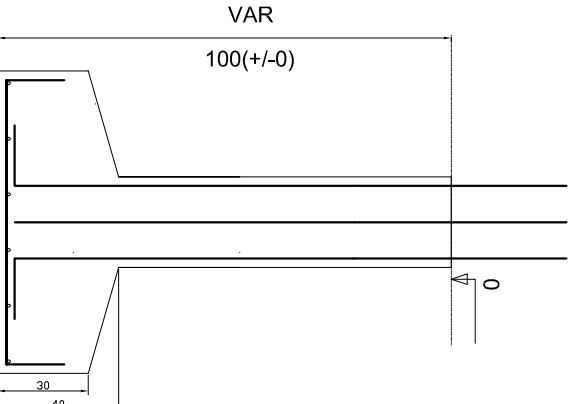
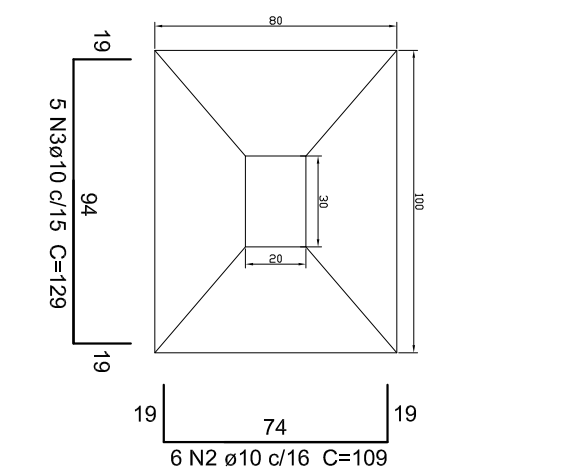
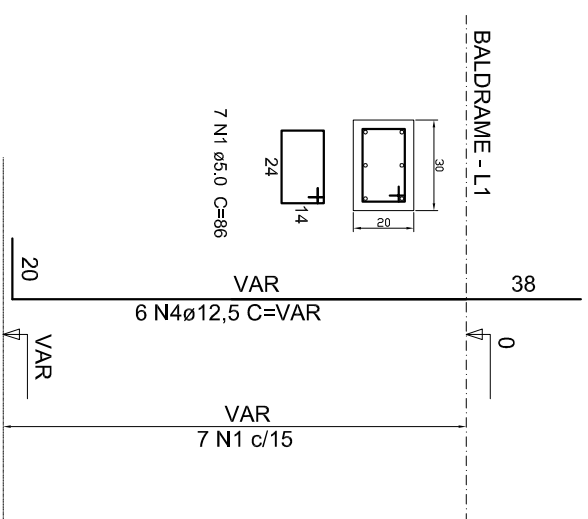
P1=P2=P4=P7=P8=P13=P14=P15=P16=P17  
 =P20=P21=P22=P24=P26=P27=P28=P30=P31  
 P32=P33=P34=P35

S1=S2=S4=S7=S8=S13=S14=S15=S16=S17  
 =S20=S21=S22=S24=S26=S27=S28=S30=S31  
 S32=S33=S34=S35

ESC 1:25

PLANTA  
 ESC 1:25

CORTE  
 ESC 1:25



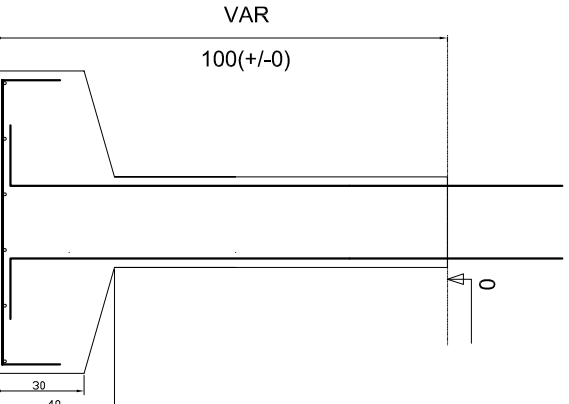
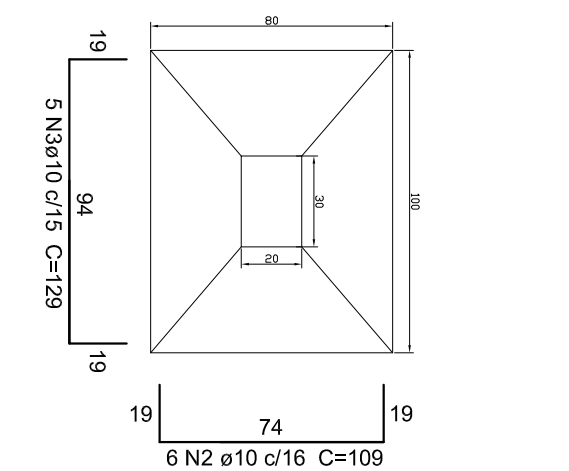
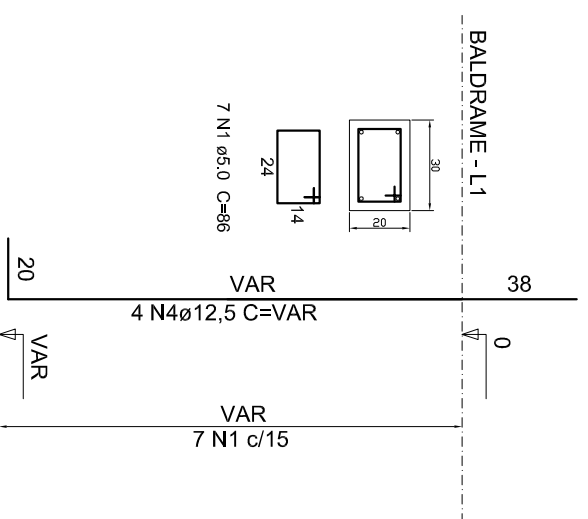
P3=P5=P6=P9=P10=P11=P12=P18=P19  
 =P23=P25=P29

S3=S5=S6=S9=S10=S11=S12=S18=S19  
 =S23=S25=S29

ESC 1:25

PLANTA  
 ESC 1:25

CORTE  
 ESC 1:25



Relação do aço

ACO	N	DIAM (mm)	QUANT (Barras)	UNIT (cm)	C.TOTAL (cm)
CA60	1	5,0	245	86	21070
CA50	2	10,0	210	109	22890
	3	10,0	175	129	22575
	4	12,5	186	158	29388

Resumo do aço

ACO	DIAM (mm)	C.TOTAL (m)	PESO (kg)	PESO TOTAL (kg)
CA50	12,5	293,88	283,00	563,52
CA60	10,0	454,65	280,52	563,52
CA60	5,0	210,70	32,45	32,45

Volume de concreto (fck=25Mpa) = 11,06 m³  
 Area de forma = 46,55 m²

OBRA LOCAL:  
**Centro Municipal de Eventos**  
 Rua Crispim Teixeira Sobrinho, S/Nº, Coxilha-RS

TÍTULO:  
**Projeto Estrutural**

DESCRIÇÃO:  
**Sapatas**

PROPRIETÁRIO:

RESPONSÁVEL TÉCNICO:

TULO JOSÉ ORTIZ  
 PREFEITO MUNICIPAL

MARCOS ANDRÉ MIOZZO ZAVODNIK  
 Eng. Civil CREMAS 167892

ESCALA:  
 1/25

DATA:  
 ABRIL/2019

FRANQUIA Nº:  
**EST 02/09**