

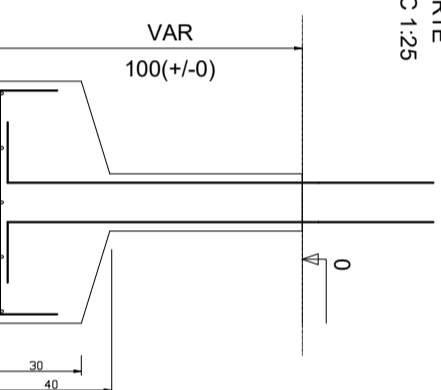
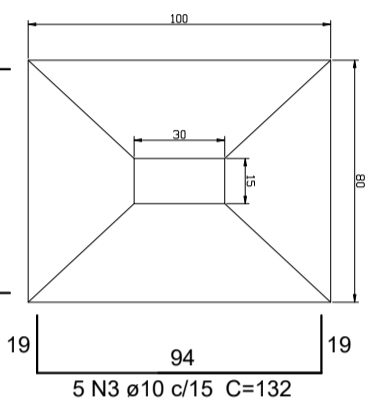
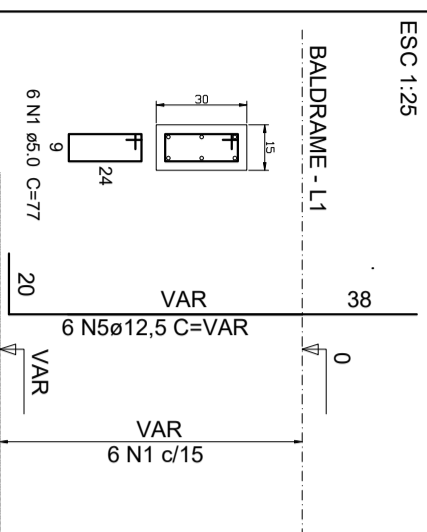
P1=P2=P3=P4

S1=S2=S3=S4

ESC 1:25

PLANTA  
ESC 1:25

CORTE  
ESC 1:25



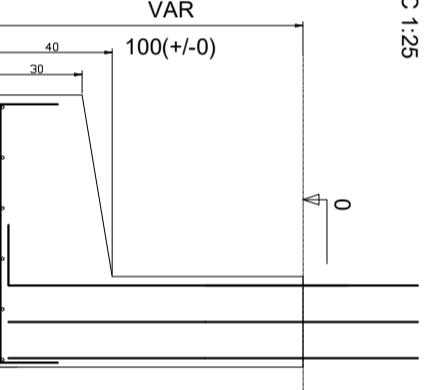
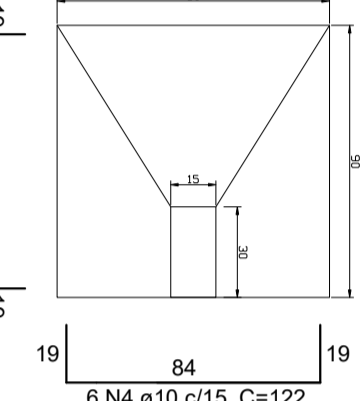
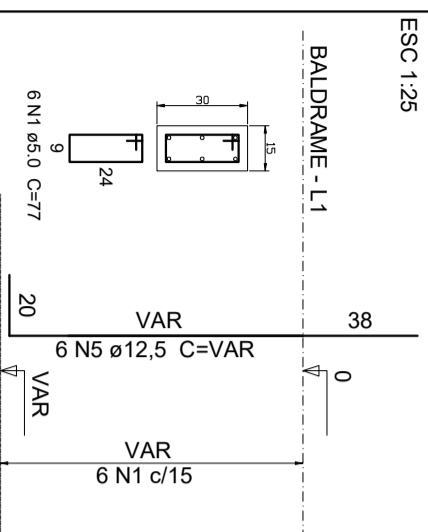
P5=P6

S5=S6

ESC 1:25

PLANTA  
ESC 1:25

CORTE  
ESC 1:25



Relação do aço

AÇO	N	DIAM (mm)	QUANT (Barras)	UNIT (cm)	C.TOTAL (cm)
CA60	1	5,0	36	77	2772
CA50	2	10,0	24	112	2688
	3	10,0	20	132	2640
	4	10,0	24	122	2928
	5	12,5	36	158	4608

Resumo do aço

AÇO	DIAM (mm)	C.TOTAL (m)	PESO (kg)	PESOTOTAL (kg)
CA50	12,5	46,08	44,38	44,38
CA50	10,0	82,56	50,94	95,32
CA60	5,0	27,72	4,27	4,27

Volume de concreto (fck=25Mpa) = 1,69 m³



OBRA LOCAL:  
Ampliação da Unidade Básica de Saúde de Coxilha  
Rua Valmi Pedrosso Severo, Nº 01, Centro, Coxilha/RS

TÍTULO:  
Projeto Estrutural

DESCRIÇÃO:  
Sapatas

PROPRIETÁRIO:

JOÃO EDUARDO OLIVEIRA MANNICA  
PREFEITO MUNICIPAL

RESPONSÁVEL TÉCNICO:

MARCOS ANDRÉ MOZZO ZAVODNIK  
Eng. Civil OBRAS 1 67982

ESCALA:  
1/25

DATA:  
Maio/2022

FRANQUIA Nº:

ES  
02